

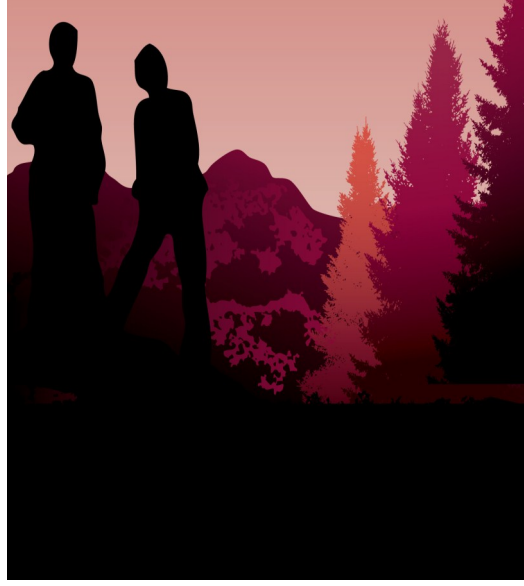
***A Special Opportunity
to exhibit at
NADD's Annual Conference
in Denver (Broomfield)!***

NADD, an Association for Persons with Developmental Disabilities and Mental Health Needs, is proud to offer you the opportunity to promote your organization at our 29th Annual Conference to be held in Denver (Broomfield) CO.

NADD is committed to advancing mental wellness for persons with developmental disabilities through the promotion of excellence in mental health care. Take advantage of this opportunity to gain valuable exposure to the top names in the field of ID/MH by becoming an exhibitor.



An association for persons with
Developmental disabilities and
Mental health needs



***Exhibitor
Brochure***

***NADD 29th
Annual
Conference &
Exhibit Show***

***October 17-19, 2012
Omni Interlocken Resort
Denver (Broomfield), CO***

Exhibitor Opportunities

	Before Aug. 1	After Aug. 1
Single Table Exhibitor Booth	\$700	\$875
Double Table Exhibitor Booth	\$1,000	\$1,250
Partnering Exhibitor	\$2,000	\$2,000
Premium Exhibitor	\$3,000	\$3,000
Literature Display	\$275	\$350

Exhibit booth purchase includes:

- ◆ Single Table Exhibitor Booth: One (1) 6' draped table with one (1) chair
- ◆ Double Table Exhibitor Booth: Two (2) 6' draped table with one (1) chair
- ◆ Premium or Partner Exhibitor - see next page

Added benefits for exhibitors:

- ◆ All coffee breaks during show hours will be held in the exhibit area to maximize participant exposure.
- ◆ An Exhibitor Directory that includes a description of each exhibitor will be provided to each Conference attendee.
- ◆ Exhibitor drawing to increase traffic to all booths.
- ◆ Exhibitors are permitted to sell their products on site during the Conference.
- ◆ One (1) FREE Conference registration (Thursday-Friday) included with each exhibit booth purchase (a \$590 value).
- ◆ Complimentary list of Conference attendees provided after the Conference.
- ◆ Networking opportunities with decision makers.
- ◆ Raffle opportunity for you to raffle your products to the attendees. It will be your responsibility to distribute tickets, pick a winner and delivery the prize to the winner. NADD will not be involved in this activity nor will it accept any responsibility of the raffle.
- ◆ Exhibitor listed on NADD website

Literature display:

If your organization is unable to exhibit at the Conference, we have made special provisions for a literature display area. Each UNSTAFFED literature display area will be a minimum of two square feet. NADD will refresh the literature display throughout the week to ensure exposure of your organization's material.

Online application:

All of the materials required to be an exhibitor are available online. Please visit the NADD website at www.thenadd.org and you will be linked to the page where you can access the information. You will need to submit the following materials to NADD as part of the application process:

1. An exhibitor application
2. NADD Exhibitor contract
3. Drexel University Contract
4. 50 word abstract describing your products/services

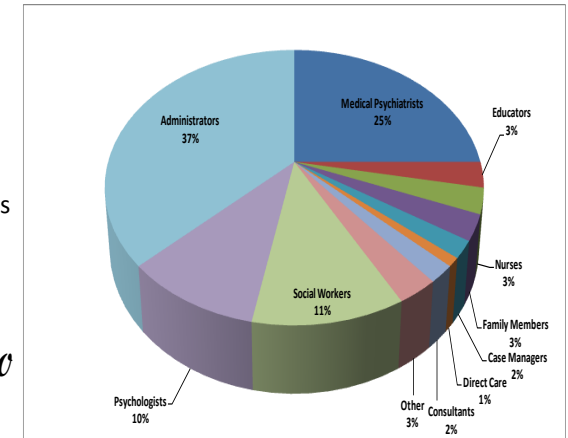
Instructions of when and how to send your materials/products to the hotel is also available online. Please submit above materials by fax, mail or electronically. All materials are due by **September 1, 2012.**

Who Should Exhibit?

Exhibitors are organizations seeking to educate approximately 500 attendees about products and services offered in an effort to improve client care.

Examples of exhibitors:

- ◆ Pharmaceutical Companies
- ◆ Product Manufacturers
- ◆ Residential Providers
- ◆ Publishing Companies
- ◆ Support & Treatment Providers
- ◆ Insurance Companies
- ◆ Software Companies



Premium Exhibitors — \$3,000

Exhibiting at this level includes:

- ◆ One year NADD organizational membership (up to an \$800 value)
- ◆ Double Booth (\$1,000/\$1,250 value)
- ◆ Three (3) free full conference registrations (Thurs.-Fri., \$1,770 value)
- ◆ One page flyer or brochure describing your product/services to be placed in all attendees packets
- ◆ Listing in Exhibitor Brochure
- ◆ Receive conference attendee listing after the conference
- ◆ Recognition as a premium exhibitor
- ◆ Exhibitor listed on NADD website

Partnering Exhibitors — \$2,000

Exhibiting at this level includes:

- ◆ One Year NADD organizational membership (up to an \$800 value)
- ◆ Exhibit booth (\$700/\$875 value)
- ◆ Two (2) FREE full conference registration (Thurs.-Fri., \$1,180 value)
- ◆ Listing in exhibitor brochure
- ◆ Receive conference attendee listing after the conference
- ◆ Recognition as a partnering exhibitor
- ◆ Exhibitor listed on NADD website

Please Note: Exhibitor space is limited and will be assigned on a first received and paid in full basis. NADD has the sole right to approve or disapprove any and all advertisers, sponsors, and exhibitors.